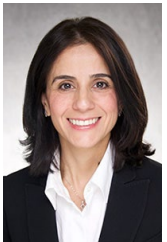


Division of Endocrinology – Clinical Research

Bone/Education



Amal Shibli-Rahhal, MD, MS

1. Clinical Professor Endocrinology
 2. Associate Dean for Student Affairs and Curriculum, CCOM
- Clinical Research in Bone Health.
 - Expertise in QI projects.
 - Research projects in Medical Education



NET Tumors

Joseph Dillon, MB, BCh, BAO

- Professor – Endocrinology
Director of Neuroendocrine Tumor Clinic
- Expertise in NET treatment and clinical trials.

UI Health Care designated first Pheo Para Cancer Center of Excellence in Iowa and surrounding states



Obesity/Diabetes Therapy



Marcelo Correia, MD, MSc, PhD

- Clinical Assistant Professor
- Clinician for MOVE! program for obesity treatment at VA.
 - Clinical Trial on Very Low Calorie Diets for MASLD

Weight Stigma



Kathleen Robinson, MD, PhD

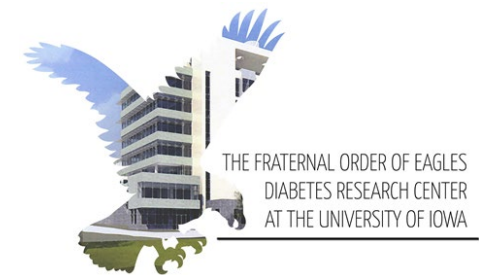
- Assistant Professor
- Research in clinical effects of Weight Stigma in Healthcare



William Sivitz, MD

- Emeritus Professor of Endocrinology
- Director of Iowa site for GRADE Trial and EDIC continuing trials.
 - Basic Research: Control of energy utilization and Mitochondrial Reactive Oxidant damage in diabetes.

Division of Endocrinology – Basic Research



<https://medicine.uiowa.edu/diabetes/>

CVD and Diabetes

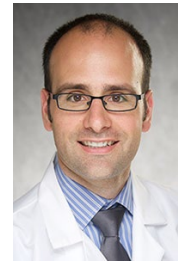


Ayotunde Dokun, MD, PhD
Chief of Endocrinology

Lab Goals:

- Molecular mechanisms of Diabetes-related PVD, vascular occlusion and Thrombosis.

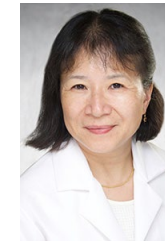
Diabetic Muscle disease



Brian T. O'Neill, MD, PhD
Associate Professor - Endocrinology
Program Director for Endocrine Fellowship

- Insulin/FoxO action on Muscle Strength and Mitochondrial Function in Diabetes.

Beta-Cell Dysfunction



Yumi Imai, MD
Professor - Endocrinology
Lab Goals:

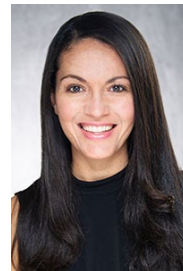
- Lipid handling and inflammation as contributors to pancreatic beta-cell failure in type 2 diabetes.

Dyslipidemia



Bhagirath Chaurasia, PhD
Assistant Professor - Endocrinology

- Effect of ceramides and other toxic lipids on cardiometabolic disease.



Renata P. Alambert, PhD
Assistant Professor - Endocrinology

Identification of the molecular mechanisms that regulate Skeletal Muscle Crosstalk with other tissues in metabolic disease

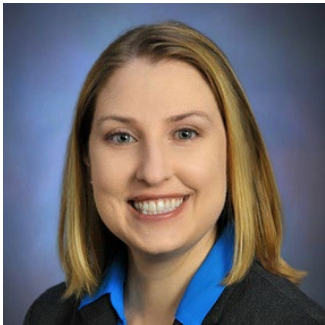


Sam Stephens, PhD
Associate Professor - Endocrinology
Lab Goals:

- Fundamental aspects of islet cell function, insulin secretion, and beta cell survival.

Division of Endocrinology – Clinical Research

Clinical Research Projects



- **Immediate preoperative hyperglycemia correlates with complications in non-cardiac surgical cases**

- Sarah Dougherty (Former Medical Student)
- Julie Schommer (Former Fellow)

J Clin Anesth. 2021 Nov;74:110375.

- **NAFLD in Type 1 Diabetes:**

- Yinka Taiwo (Former Fellow, current Attending).
Applying for K award



- **Weight stigma in healthcare outcomes:**

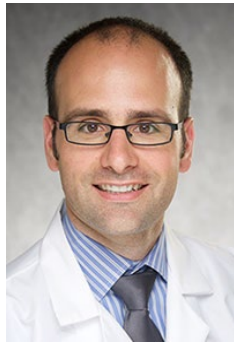
- Katie Robinson (Former Fellow, current Attending)

Obes Sci Pract. 2022 Jun 8;8(6):784-793.



Division of Endocrinology – Clinical Research

Contact for Research in Endocrinology:



Brian T. O'Neill, MD, PhD

Associate Professor – Endocrinology
Program Director
Fellowship Research Coordinator

brian-oneill@uiowa.edu